

# teamLab

PARTICLE POETRY

**GAJAH GALLERY**  25

In collaboration with Ikkan Art International

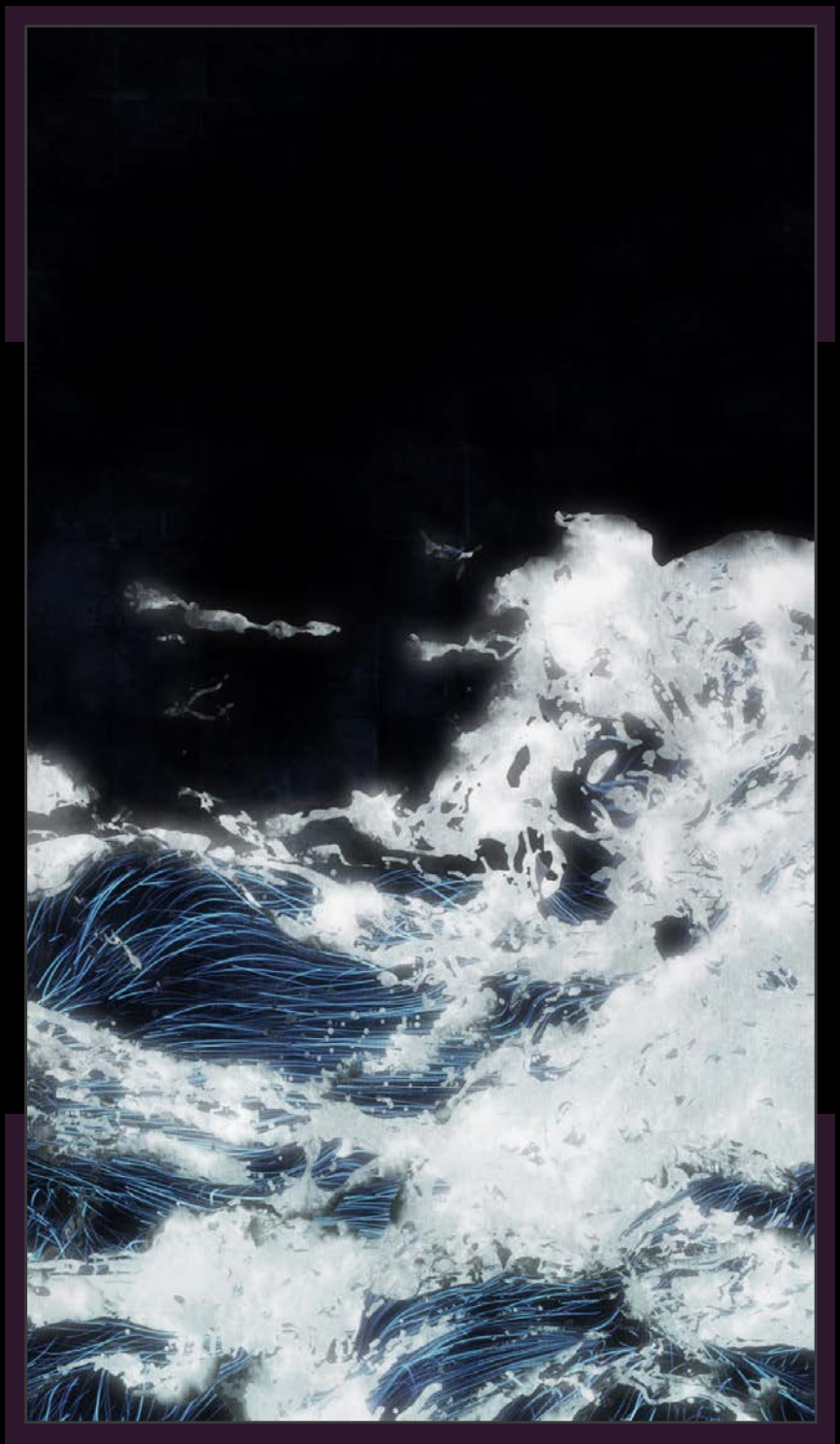
## BLACK WAVES

2016, DIGITAL WORK, SINGLE CHANNEL, CONTINUOUS LOOP

Dark, translucent waves gently flow and blend into a pitch-black background, bringing one to the serene, mysterious atmosphere of an ocean's shore at night. As the natural flow of water is simulated in an immersive, computer-generated three-dimensional space, the waves' glimmering white foam and bright blue lines emphasise their intricate gestures. The majesty of the waves evokes Kanagawa's iconic *The Great Wave*.

Hailing from Japan, teamLab employs present-day technology to connect to the past, illuminating the way their ancestors saw the world centuries ago: where, just as in *The Great Wave*, water was seen as alive; where the waves of the ocean were expressed as wild, breathing entities; and where there was no boundary between nature and humanity.

In the form of an ethereal, limitless digital landscape, *Black Waves* breaks barriers between art, nature, the ancient and contemporary.



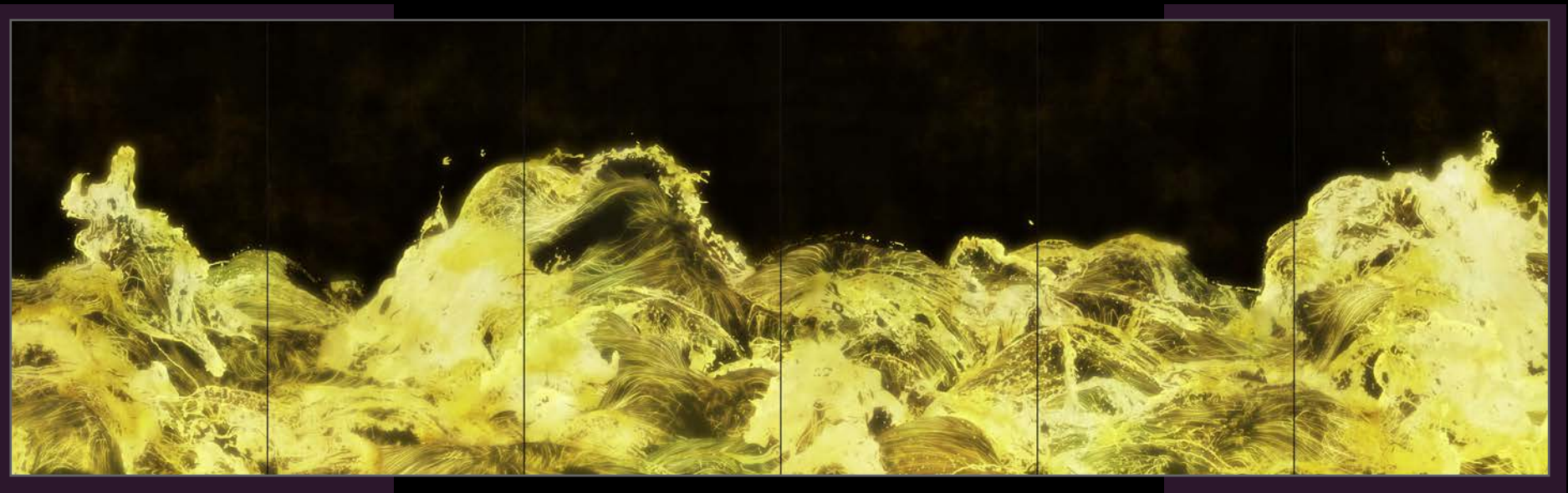
## GOLD WAVES

2017, DIGITAL WORK, 6 CHANNELS, CONTINUOUS LOOP

The raw, graceful movements of gold waves crashing and flowing mesmerises in an endless loop. teamLab simulates the natural flow of waves in an immersive, computer-generated three-dimensional space, in which the group calculated the interactions of hundreds of thousands of water particles, replicated their behaviours, and drew lines to capture their delicate movements.

The lines make the waves come alive, evoking the feeling of standing before a grand shore for hours and hours, until the water's intricate details come into full, vivid focus to the viewer. The water's bright, electric gold colour, however, injects a surreal dimension to the landscape—collapsing boundaries between the real and fantastic.

*Gold Waves* transports the viewer to a world in which one is so deeply immersed in the rhythms and breaths of nature, one is brought to a place of transcendence, of magic.





## FLOWER AND CORPSE GLITCH

2012, DIGITAL WORK, SINGLE CHANNEL, 19:25 MIN (LOOP)

A gold surface unpeels to reveal an ancient city bustling in its everyday glory. Amid a richly coloured, dreamlike background harkening the landscapes of traditional Japanese art, a story unfolds: a disease spreads throughout the city, moving a man named Hiraku Genji to follow the disease to a mountain village.

One day, the mountain village is asked to give timber to the city. When villagers cut down a sacred tree, Yamata no Orochi, enraged, casts heavy rain and floods the valley—sparking a battle between the gods of the forest and warriors who are called to defend the mountain villagers. The warriors emerge victorious; but the battle destroys the natural land of the mountain villagers, leaving them suffering from hunger.

In despair, Hiraku Genji plants a seed over the corpse of Yamata no Orochi—where, gradually, flowers begin to bloom from the corpse. The forest is restored back to life, and the mountain villagers once again reap the benefits of nature.

*Flower and Corpse Glitch* seamlessly marries contemporary technology and mythical storytelling to create a timeless, mesmerising work that communicates the cyclical struggle for harmony between nature and civilisation.









# IMPERMANENT LIFE, AT THE CONFLUENCE OF SPACETIME NEW SPACE AND TIME IS BORN

2018, DIGITAL WORK, 4 CHANNELS, CONTINUOUS LOOP

Amid a background dotted with white cherry blossoms, an abstract, earthy mass floats at the centre of this four-channel digital installation. Appearing like a surreal landscape, the mass slowly turns and expands as if it were alive. Thick white circular strokes hover above the mass, resembling wind.

As the video zooms into a close-up view of the mass, one discovers black ant-like creatures moving quickly across a complex environment, revealing evidence of life and sustenance.

In time, one then observes the background subtly transforming from light to dark, akin to the way day moves into the night.

*Impermanent Life, At the Confluence of Spacetime New Space and Time is Born*, though largely abstract, feels deeply evocative of the natural world: where transience takes varying shapes and forms, and time determines the course of myriad coexisting lives.









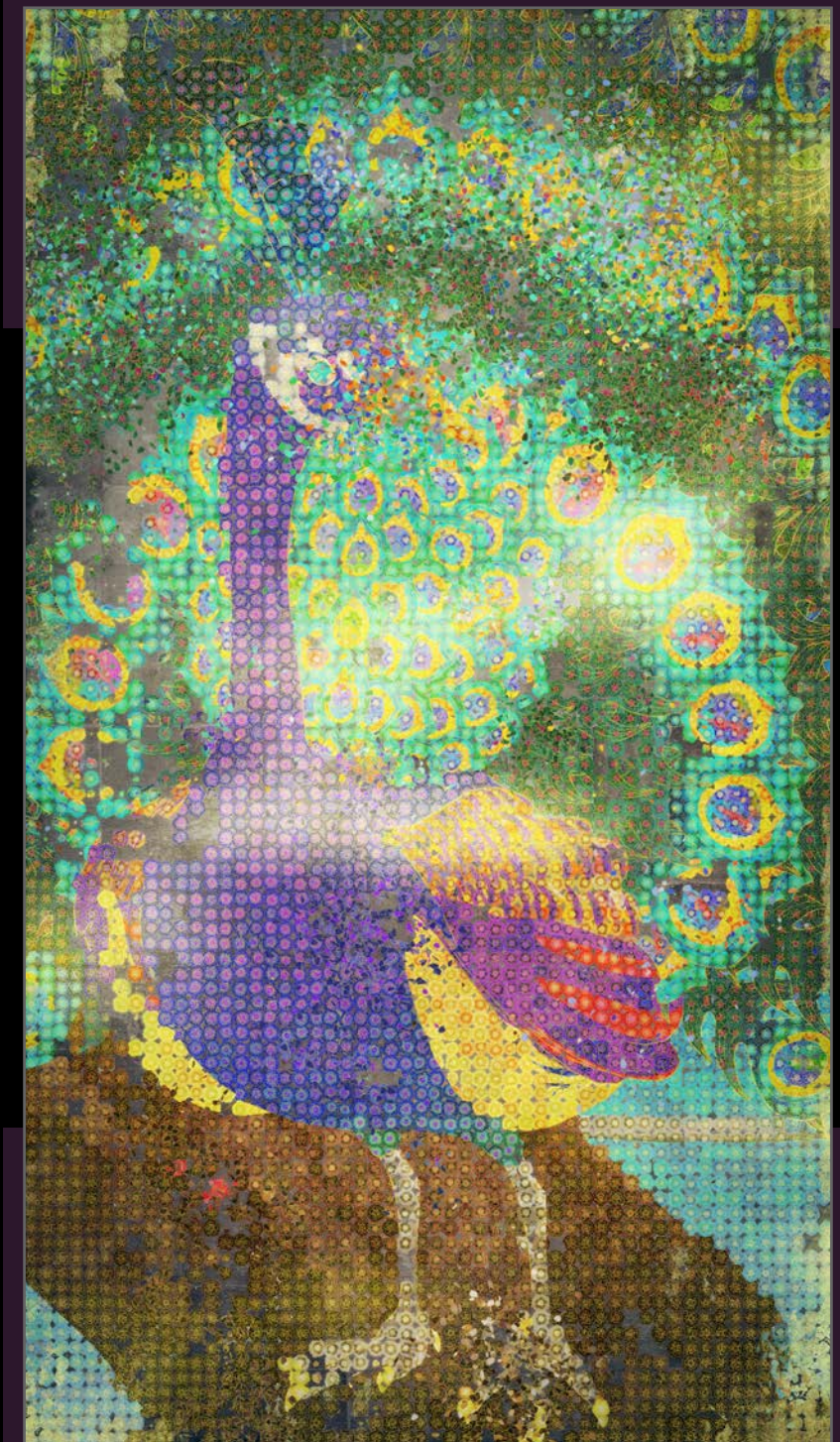
## PEONY PEACOCK

2017, DIGITAL WORK, SINGLE CHANNEL,  
RANDOMIZED VIDEO LOOP, 3 SEQUENCES, 5:20 MIN EACH

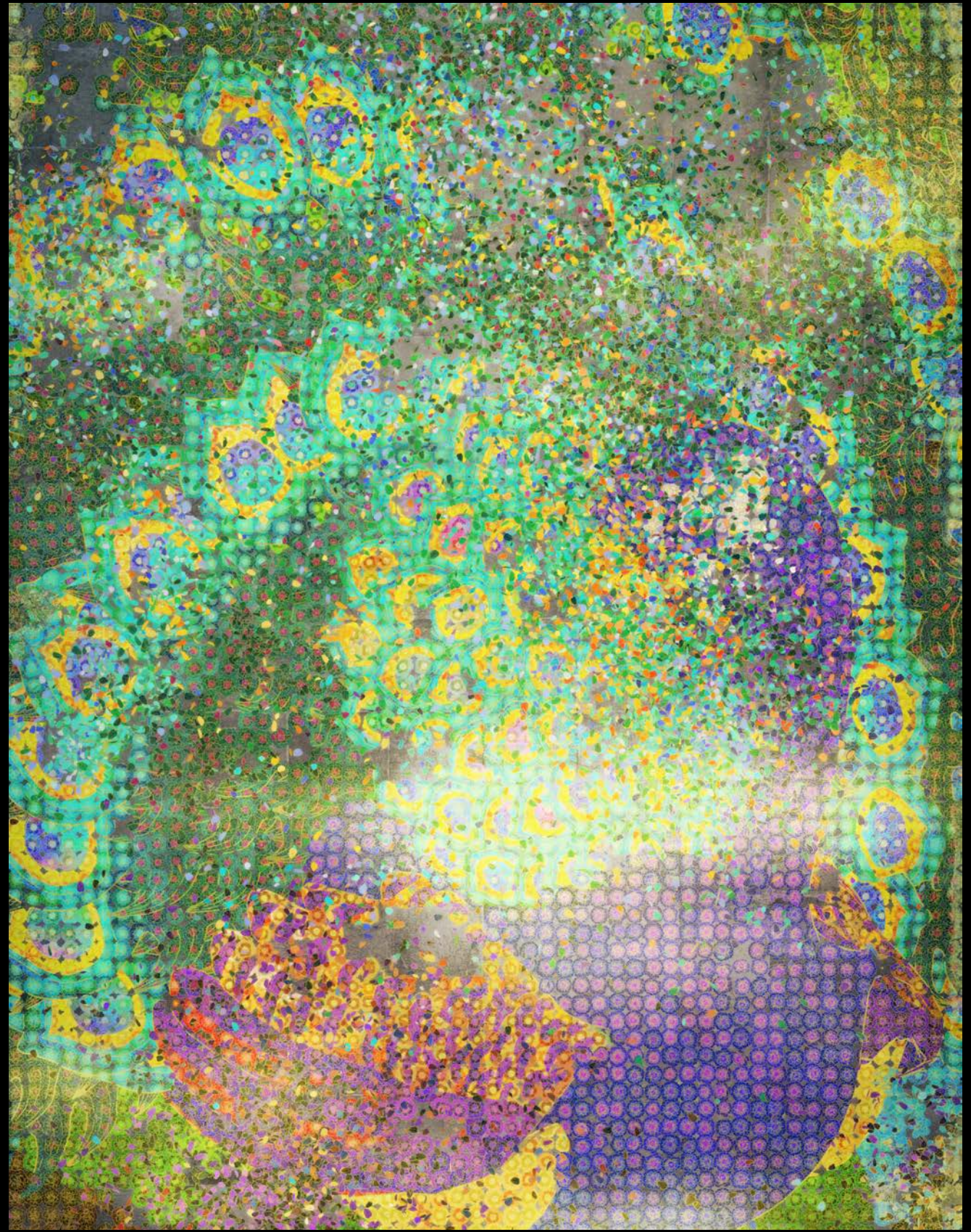
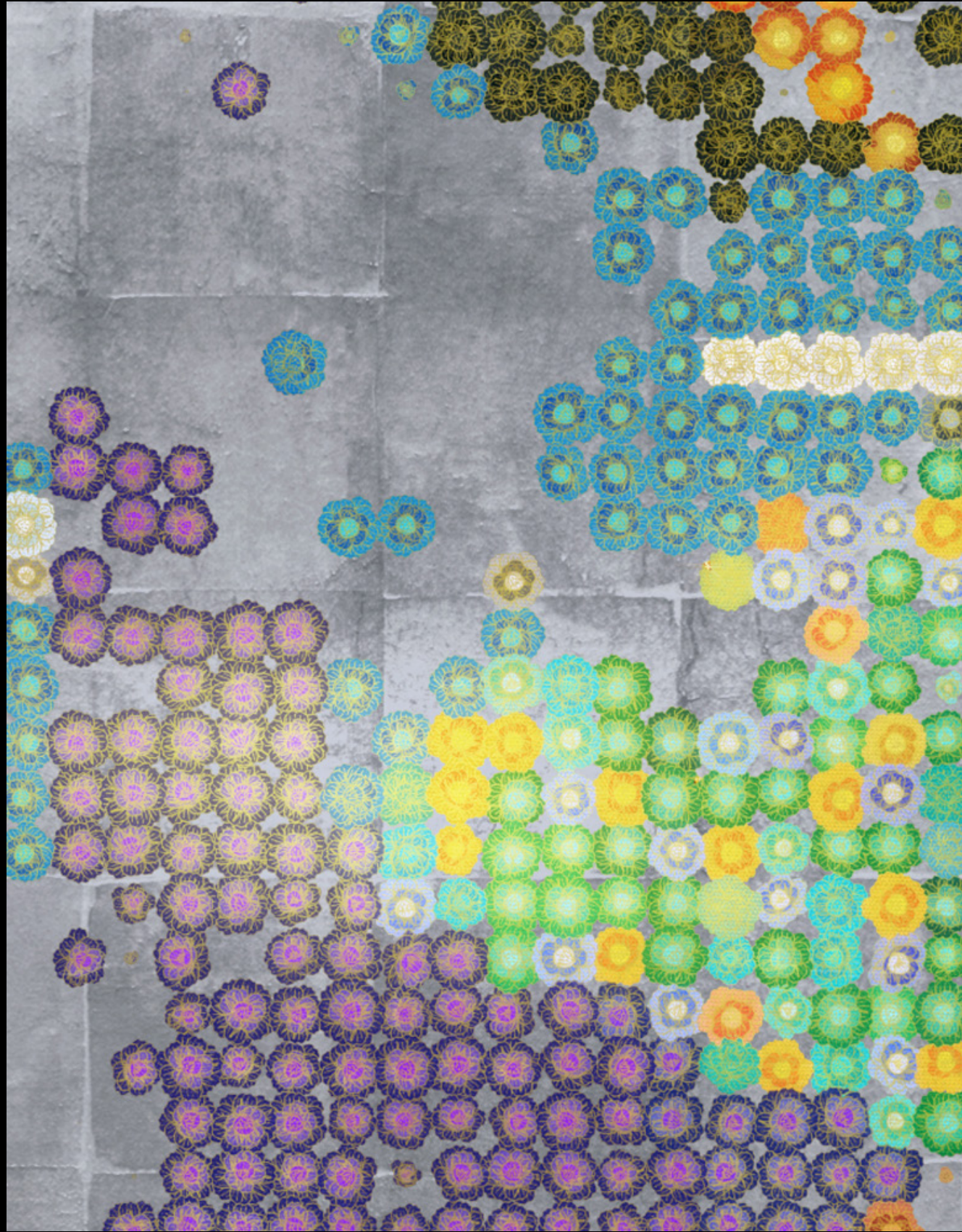
Against a solid grey background, peony particles gradually pop out and form into a grand peacock standing before a vast blue sky. The bird's splendid wings then spread, creating a vibrant mint green background dotted with a purple and yellow pattern.

In its full form, the peacock appears ethereal—graceful in its movements and overpowering in its presence. But, like a ghostly creature, it disappears almost as swiftly as it appears, holding no firm grounding or permanence. Starting with the head, the peonies that form the peacock disintegrate into a blur of green, purple and yellow colour.

The video continually loops, creating a powerful juxtaposition of the fragile and infinite. The viewer, immersed in this enthralling display of time's passage, must suddenly confront an inevitable mortality, moved to discover in it a sense of beauty.









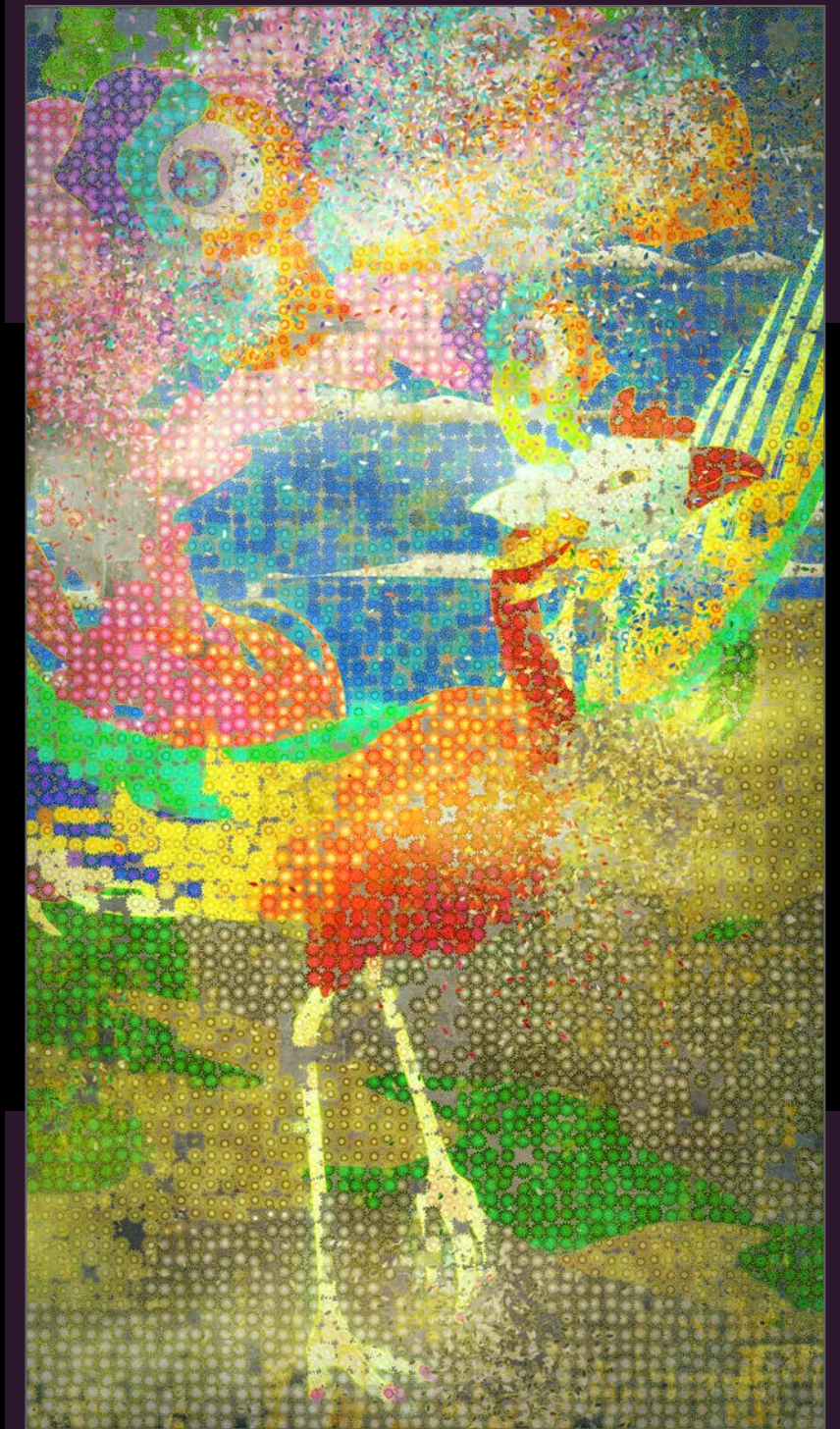
## SUNFLOWER PHOENIX

2017, DIGITAL WORK, SINGLE CHANNEL,  
RANDOMIZED VIDEO LOOP, 3 SEQUENCES, 5:20 MIN EACH

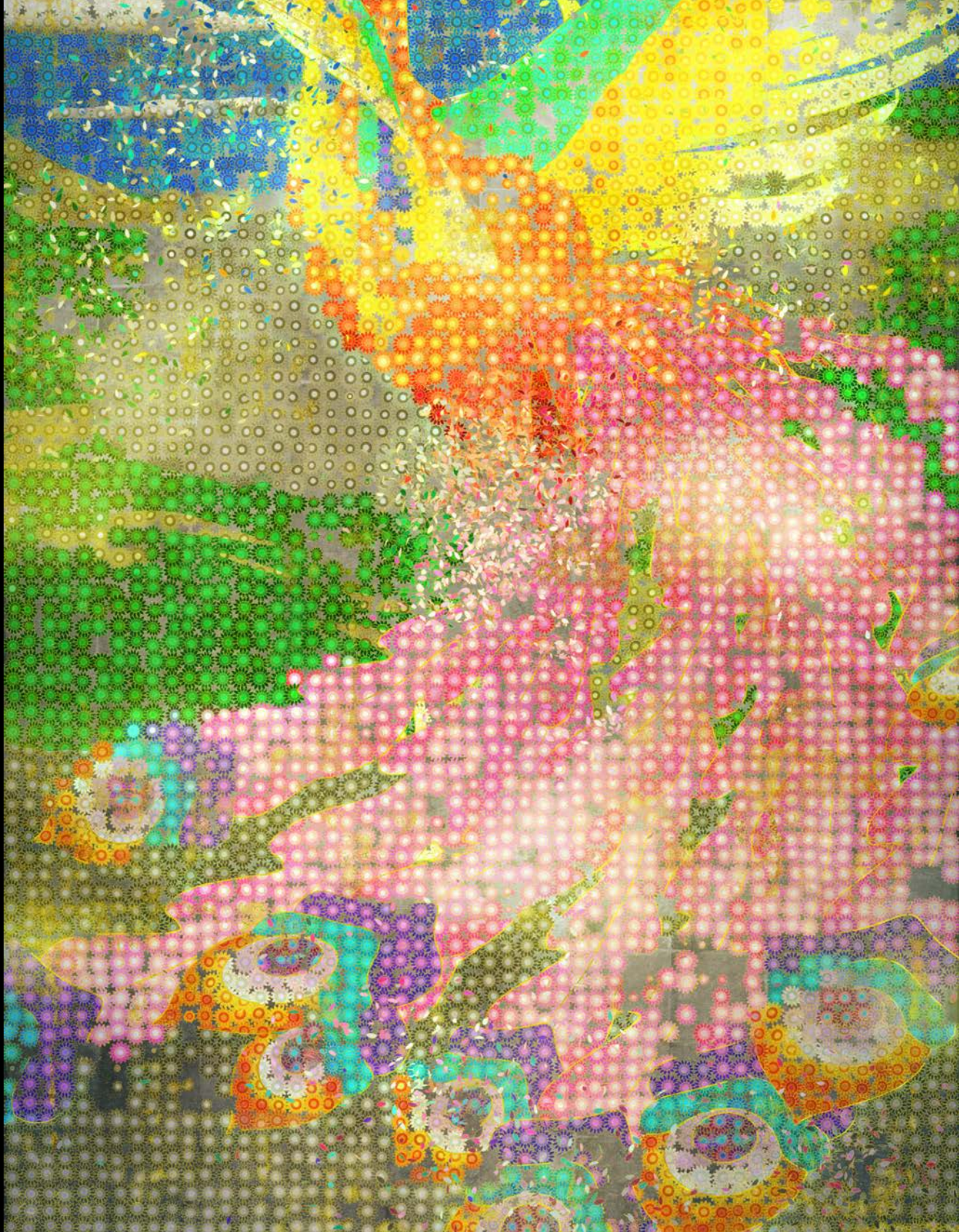
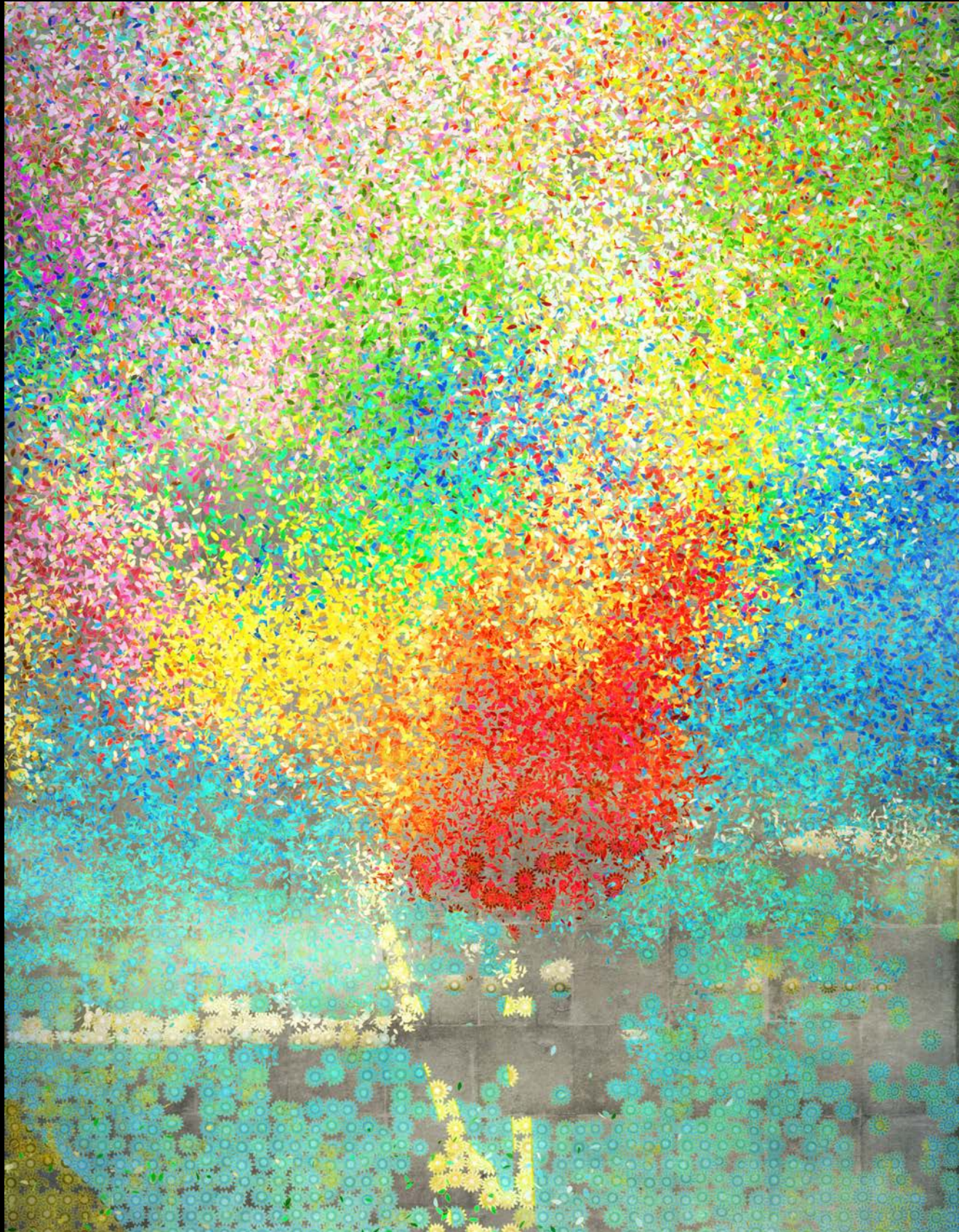
Brightly coloured circular shapes slowly emerge from the centre of a horizontal grey background. Upon closer inspection, one finds that the circles are made up of small sunflowers in full bloom.

As more flowers bloom, the shape of a phoenix, made from the same floral particles, inhabits the foreground and gently flaps its wings. At the peak of the video loop, the entire screen bursts with the life and colour radiating from the bird, which, for a fleeting moment, is depicted as whole. But in time, the flowers scatter; its petals fall apart; and the phoenix disappears into an abstract, confetti-like explosion of colour. The video then returns to its grey beginning.

Through the temporal nature of the digital video medium, *Sunflower Phoenix* poignantly captures how nature is ephemeral and fragile, caught in an eternal cycle of being and breaking.









# ABOUT TEAMLAB

**teamLab** (f. 2001) is an international art collective, an interdisciplinary group of various specialists such as artists, programmers, engineers, CG animators, mathematicians and architects whose collaborative practice seeks to navigate the confluence of art, science, technology, and the natural world.

teamLab aims to explore the relationship between the self and the world and new perceptions through art. In order to understand the world around them, people separate it into independent entities with perceived boundaries between them. teamLab seeks to transcend these boundaries in our perception of the world, of the relationship between the self and the world, and of the continuity of time. Everything exists in a long, fragile yet miraculous, borderless continuity.

teamLab has been the subject of numerous exhibitions at venues worldwide, including New York, London, Paris, Singapore, Silicon Valley, Beijing, Taipei, and Melbourne among others. The permanent museums teamLab Borderless opened in Odaiba, Tokyo in June 2018, and teamLab Borderless Shanghai in Huangpu District, Shanghai in November 2019. The massive body immersive space teamLab Planets in Toyosu, Tokyo is on view until the end of 2022. The large-scale permanent exhibition teamLab SuperNature soft opened in Macao in June, 2020.

teamLab’s works are in the permanent collection of the Art Gallery of New South Wales, Sydney; Art Gallery of South Australia, Adelaide; Asian Art Museum, San Francisco; Asia Society Museum, New York; Borusan Contemporary Art Collection, Istanbul; National Gallery of Victoria, Melbourne; and Amos Rex, Helsinki.

## SELECTED PERMANENT EXHIBITIONS

- 2020
- teamLab Forest**, BOSS E・ZO FUKUOKA, Fukuoka, Japan  
**teamLab SuperNature**, The Venetian Macao, Macao
- 2019
- teamLab Borderless Shanghai**, Huangpu District, Shanghai, China
- 2018
- MORI Building DIGITAL ART MUSEUM: teamLab Borderless**, teamLab Borderless, Odaiba, Tokyo, Japan  
**Mifuneyama Rakuen Hotel, Kyushu**, Mifuneyama Rakuen Hotel, Takeo Hot Springs, Kyushu, Japan
- 2017
- Digital Light Canvas, MARINA BAY SANDS**, Marina Bay Sands, Singapore
- 2017
- MoonFlower Sagaya Ginza, Art by teamLab**, Moonflower Sagaya Ginza, Tokyo, Japan
- 2016
- FUTURE WORLD: WHERE ART MEETS SCIENCE, ArtScience Museum**, ArtScience Museum, Singapore  
**Story of the Forest, National Museum of Singapore**, National Museum of Singapore, Singapore

## SELECTED EXHIBITIONS

- 2020
- teamLab: A Forest Where Gods Live**, Mifuneyama Rakuen, Takeo Hot Springs, Kyushu, Japan  
**teamLab: Digitized Ritsurin Garden**, Ritsurin Garden Takamatsu, Kagawa, Japan
- 2019
- Winter Holiday 2019 teamLab Crystal Tree**, Marina Bay Sands, Singapore  
**teamLab: Reversible Rotation**, Tolarno Galleries, Melbourne, Australia  
**Every Living Thing: Animals in Japanese Art**, Los Angeles County Museum of Art, Los Angeles, California, USA  
**The Life of Animals in Japanese Art**, National Gallery of Art, Washington D.C., USA  
**TOMORROW IS THE QUESTION**, ARoS Aarhus Art Museum, Aarhus, Denmark
- 2018
- teamLab: Dance! Art Museum and Future Parks**, Akita Museum of Modern Art, Akita, Japan  
Children’s Festival: Small Big Dreamers 2018, National Gallery Singapore, Singapore  
**teamLab : Au-delà des limites**, La Villette, Paris, France
- 2017
- NGV Triennial**, National Gallery of Victoria, Melbourne, Australia  
**Call & Response - Reinterpreting MOCA Jacksonville’s Permanent Collection**, MOCA Jacksonville, Florida, USA  
**ENJOY - L’arte incontra il divertimento**, DART Chiostro del Bramante, Rome, Italy
- 2016
- teamLab: What a Loving, and Beautiful World**, QUAD Gallery, Derby, UK  
**The Art of ZEN: From Mind to Form**, Tokyo National Museum, Japan  
**teamLab: Between Art and Physical Space**, Borusan Contemporary, Istanbul, Turkey
- 2015
- Prudential Eye Awards 2015 Exhibition**, ArtScience Museum, Singapore  
**Expo Milano 2015**, Expo Milano 2015 Japan Pavilion, Milan, Italy  
**Espace teamLab -World Unleashed and then Connecting**, MAISON&OBJET PARIS 20th Anniversary, Paris Nord Villepinte Exhibition Centre, France

\* Full CV available at [www.teamlab.art](http://www.teamlab.art)



### SINGAPORE

39 KEPPEL ROAD  
TANJONG PAGAR DISTRI PARK  
#03-04, SINGAPORE 089065

### OPERATING HOURS

MON - FRI: 11:00AM TO 7:00PM  
SAT, SUN & PH: 12:00PM TO 6:00PM

TEL: +65 6737 4202  
EMAIL: ART@GAJAHGALLERY.COM  
WWW.GAJAHGALLERY.COM

### YOGYAKARTA

JALAN BUGISAN SELATAN  
KOMPLEK PERTOKOAN ARUNA  
KELORAN BANTUL YOGYAKARTA  
55182 INDONESIA

### OPERATING HOURS

MON - FRI: 10:00AM TO 5:00PM  
SAT: 10:00AM TO 1:00PM  
CLOSED ON SUN & PH

TEL: +65 6737 4202  
FAX: +65 6737 4203  
EMAIL: ART@GAJAHGALLERY.COM

FB: [HTTP://WWW.FACEBOOK.COM/GAJAHGALLERY](http://www.facebook.com/gajahgallery)  
IG: @GAJAHGALLERY

ALL IMAGES © TEAMLAB COURTESY OF IKKAN ART INTERNATIONAL